



2015 24-karat High Relief Gold Coin
and Silver Medal



Obverse Candidate Designs



HR-O-01-C



HR-O-01-M



HR-O-02-C



HR-O-02-M



HR-O-03-C



HR-O-03-M



HR-O-04-C



HR-O-04-M



HR-O-05-C



HR-O-05-M



HR-O-06-C



HR-O-06-M



HR-O-07-C



HR-O-07-M



HR-O-08-C



HR-O-08-M



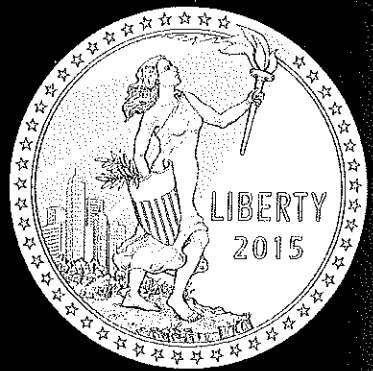
HR-O-09-C



HR-O-09-M



HR-O-10-C



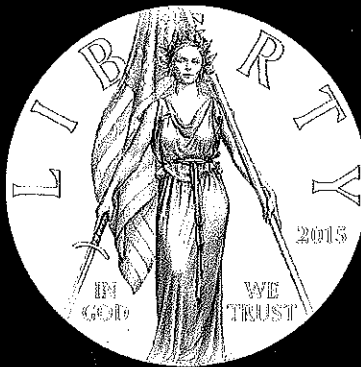
HR-O-10-M



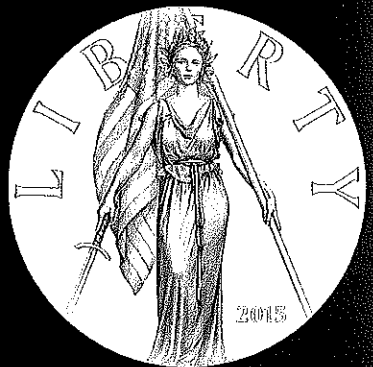
HR-O-11-C



HR-O-11-M



HR-O-12-C



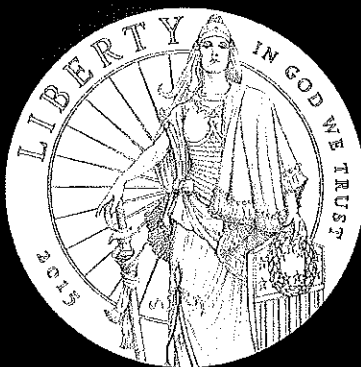
HR-O-12-M



HR-O-13-C



HR-O-13-M



HR-O-14-C



HR-O-14-M



HR-O-15-C



HR-O-15-M



HR-O-16-C



HR-O-16-M



HR-O-17-C



HR-O-17-M



HR-O-18-C



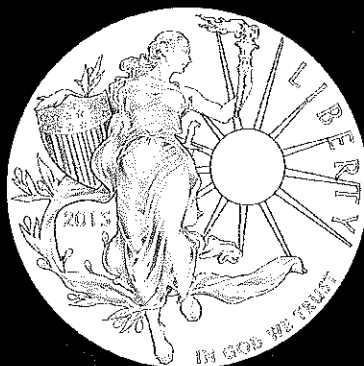
HR-O-18-M



HR-O-19-C



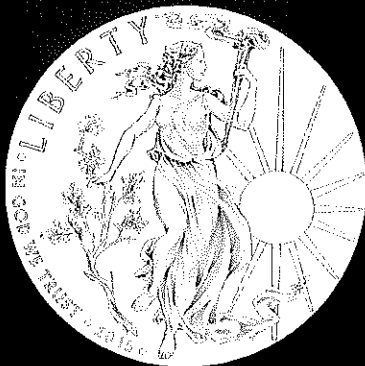
HR-O-19-M



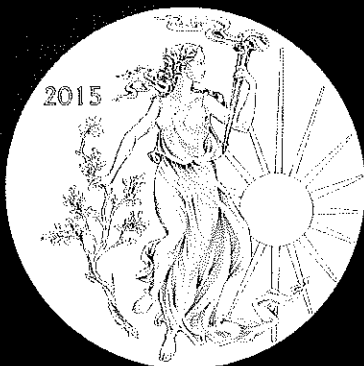
HR-O-20-C



HR-O-20-M



HR-O-21-C



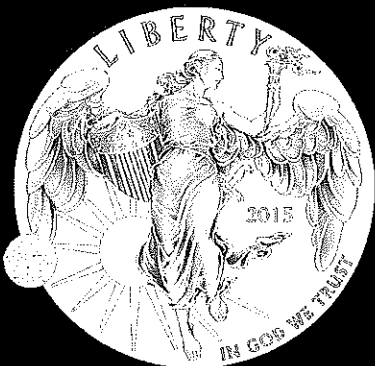
HR-O-21-M



HR-O-22-C



HR-O-22-M



HR-O-23-C



HR-O-23-M



HR-O-24-C



HR-O-24-M



HR-O-25-C



HR-O-25-M



Reverse Candidate Designs

HR-R-07-C



HR-R-07-M



HR-R-08-C



HR-R-08-M



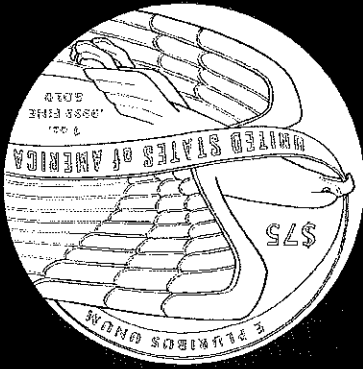
HR-R-05-C



HR-R-05-M



HR-R-06-C



HR-R-06-M



HR-R-03-C



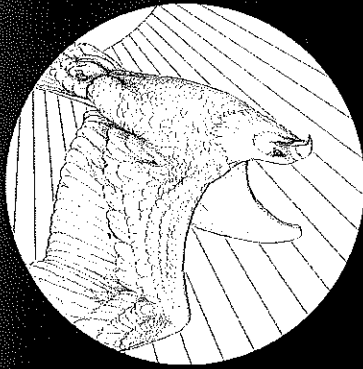
HR-R-03-M



HR-R-04-C



HR-R-04-M



HR-R-01-C



HR-R-01-M



HR-R-02-C



HR-R-02-M





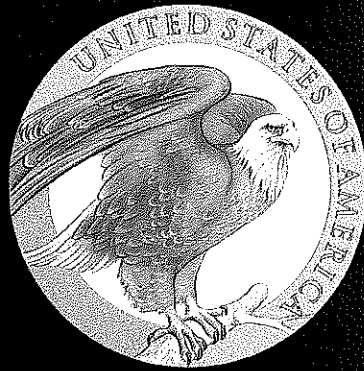
HR-R-09-C



HR-R-09-M



HR-R-10-C



HR-R-10-M



HR-R-11-C



HR-R-11-M



HR-R-12-C



HR-R-12-M



HR-R-13-C



HR-R-13-M



HR-R-14-C



HR-R-14-M



HR-R-15-C



HR-R-15-M



HR-R-16-C



HR-R-16-M