



DEPARTMENT OF THE TREASURY  
UNITED STATES MINT  
WASHINGTON, D.C. 20220

October 5, 2011

DEPUTY DIRECTOR

Mr. Gary B. Marks  
Chairperson  
Citizens Coinage Advisory Committee  
501 Pine View Lane  
Bellevue, ID 83313

Dear Mr. Marks:

Enclosed for review and comment by the Citizens Coinage Advisory Committee at its meeting on October 25, 2011, are the obverse and reverse candidate designs for the 2012 First Spouse Gold Coin and Medal Program honoring Alice Paul, Frances Cleveland, and Caroline Harrison.

In accordance with the Presidential \$1 Coin Act of 2005 (Act) (Public Law 109-145), the United States Mint is minting and issuing \$10 gold coins with images emblematic of the spouse of each President. The obverse of each coin issued bears an image of the first spouse, while the reverse depicts an image emblematic of the first spouse's life and work. In the case of President Chester Arthur, who served without a spouse, the Act provides that his corresponding First Spouse Gold Coin bear an obverse design incorporating the name and likeness of suffragist Alice Paul, who was born during his term in office. The reverse design will be representative of the suffrage movement. In addition, Frances Cleveland will be honored twice – once for each of President Grover Cleveland's two non-consecutive terms.

Additionally, the United States Mint is authorized to strike bronze medals that bear the likeness of the gold coins. The central images of both the obverse and reverse designs remain, but many of the inscriptions that are appropriate only for legal tender coins do not appear on the bronze medals.

The U.S. Commission of Fine Arts will review the candidate designs at its meeting on October 20, 2011.

We appreciate your review of the enclosed candidate designs at your meeting on October 25, 2011. A representative of the United States Mint will present the candidate designs at this meeting.

Sincerely,

Richard A. Peterson  
Deputy Director  
United States Mint

**Enclosures:** 1) Design narratives for the 2012 First Spouse Gold Coin and Medal Program  
2) Alice Paul obverse and Suffrage Movement reverse candidate designs  
3) Frances Cleveland (term 1) obverse and reverse candidate designs  
4) Caroline Harrison obverse and reverse candidate designs  
5) Frances Cleveland (term 2) obverse and reverse candidate designs



AP-O-01



AP-O-02



AP-O-03



AP-O-04



AP-O-05



AP-O-06



AP-O-07



AP-O-01-M



AP-O-02-M



AP-O-03-M



1914

AP-O-04-M



AP-O-05-M



AP-O-06-M

CFA



1930

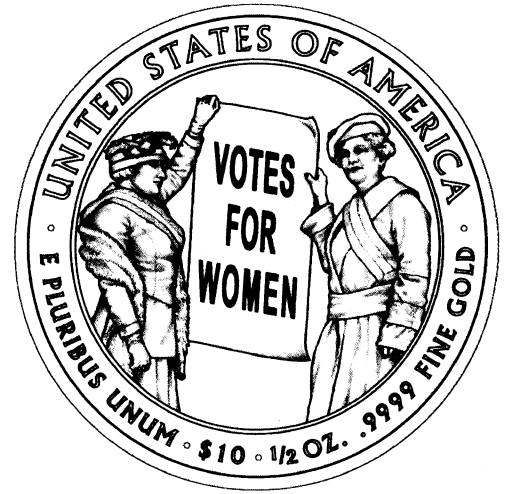
AP-O-07-M



AP-R-01



AP-R-02



AP-R-03



AP-R-04

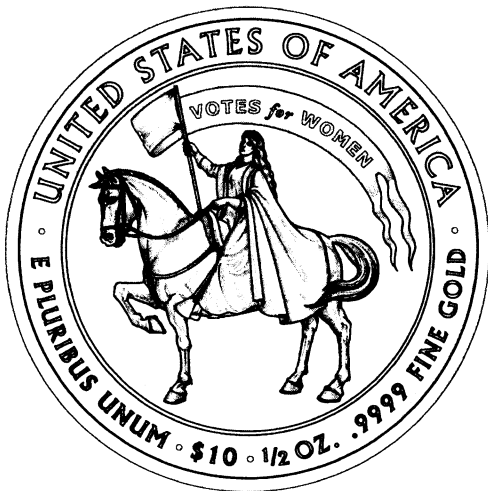


AP-R-05



AP-R-06

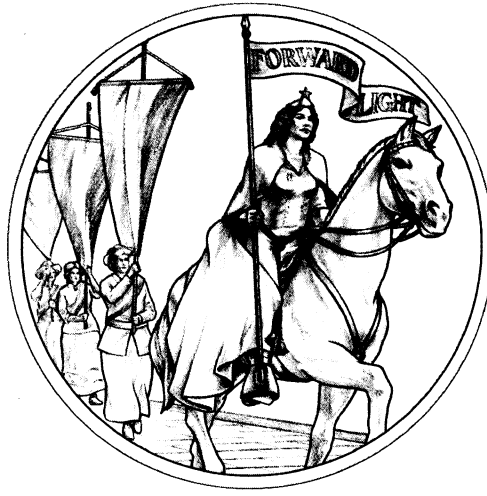
*CFA prefer these.*



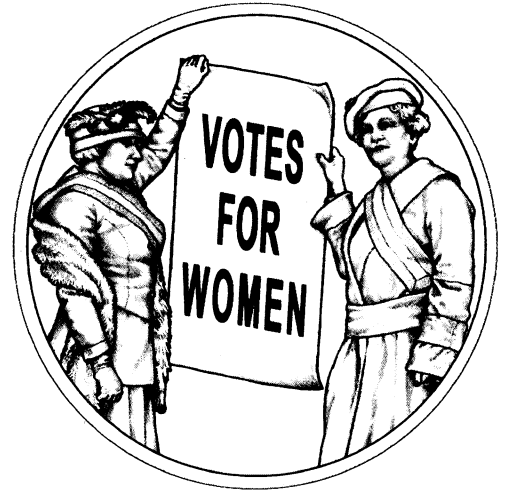
AP-R-07



AP-R-01-M



AP-R-02-M



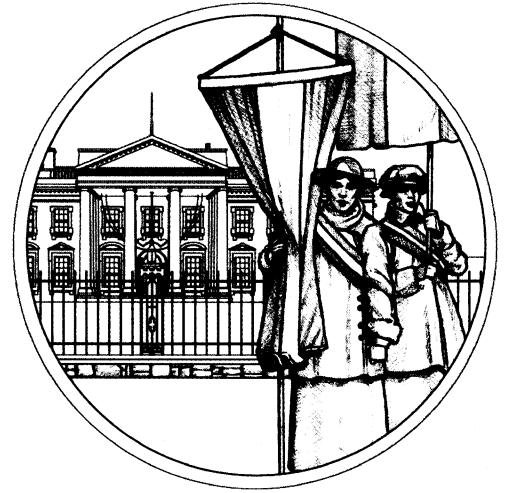
AP-R-03-M



AP-R-04-M



AP-R-05-M



AP-R-06-M



AP-R-07-M



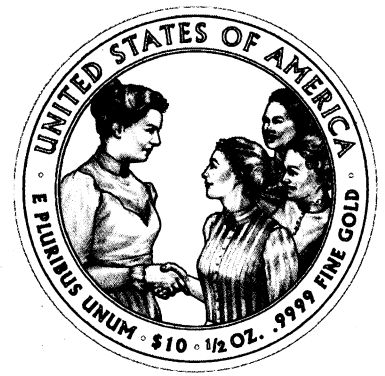
FC1-R-01



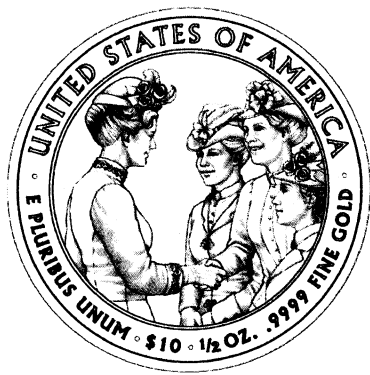
FC1-R-02



FC1-R-03



FC1-R-04



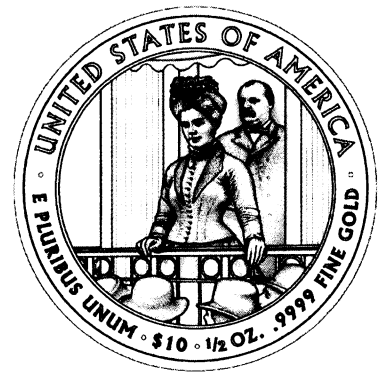
FC1-R-05



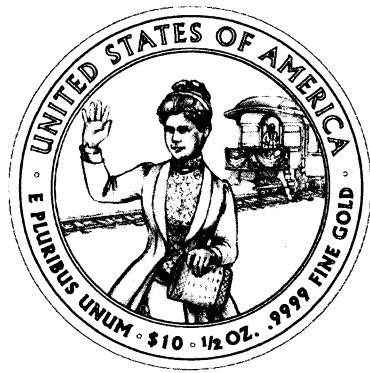
FC1-R-06



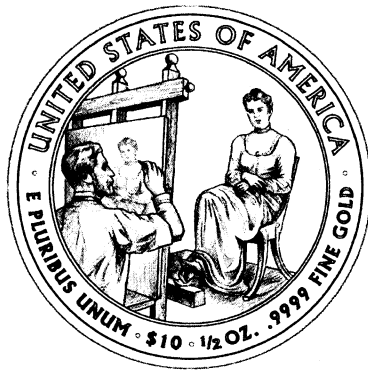
FC1-R-07



FC1-R-08



FC1-R-09



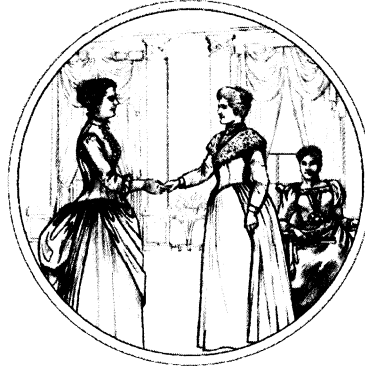
FC1-R-10



**FC1-R-01-M**



**FC1-R-02-M**



**FC1-R-03-M**



**FC1-R-04-M**



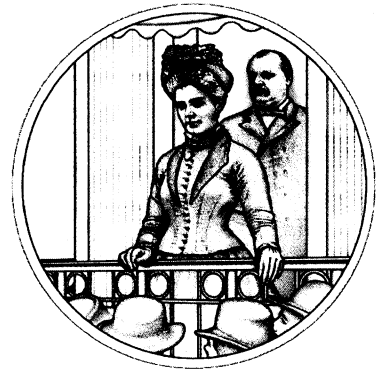
**FC1-R-05-M**



**FC1-R-06-M**



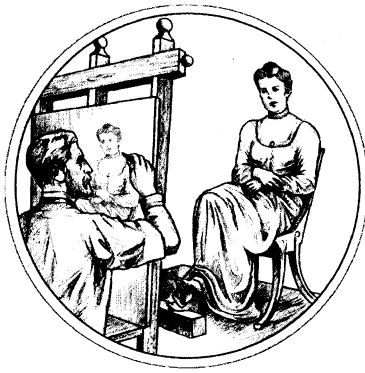
**FC1-R-07-M**



**FC1-R-08-M**



**FC1-R-09-M**



**FC1-R-10-M**

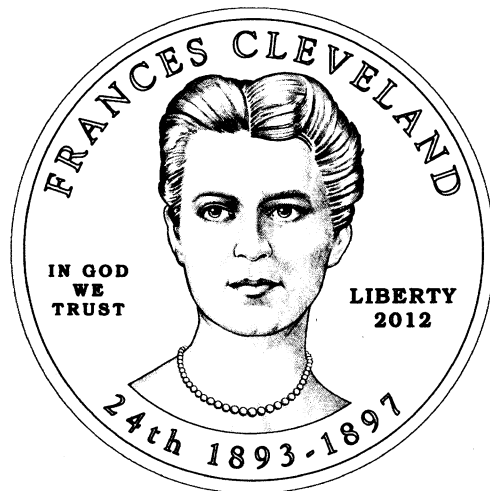




FC2-O-01



FC2-O-02



FC2-O-03



FC2-O-04



FC2-O-05



**FC2-O-01-M**



**FC2-O-02-M**



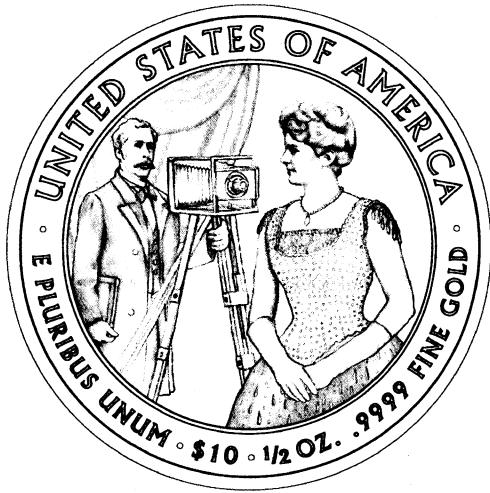
**FC2-O-03-M**



**FC2-O-04-M**



**FC2-O-05-M**



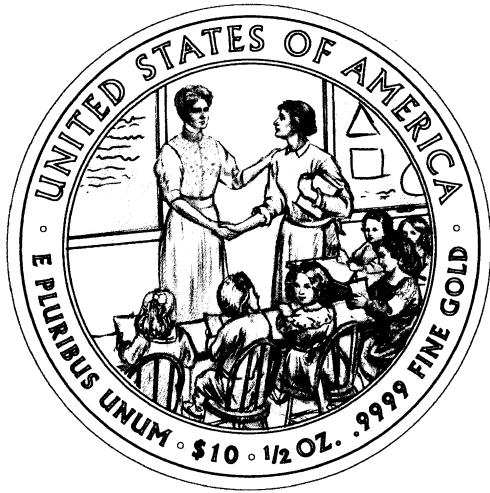
FC2-R-01



FC2-R-02



FC2-R-03



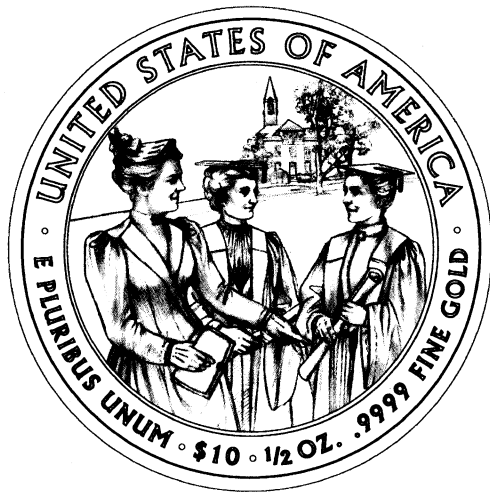
FC2-R-04



FC2-R-05



FC2-R-06



FC2-R-07



**FC2-R-01-M**



**FC2-R-02-M**



**FC2-R-03-M**



**FC2-R-04-M**



**FC2-R-05-M**



**FC2-R-06-M**



**FC2-R-07-M**



CH-O-01



CH-O-02



CH-O-03



CH-O-04



CH-O-05



CH-O-06



CH-O-07



CH-O-01-M



CH-O-02-M



CH-O-03-M



CH-O-04-M



CH-O-05-M



CH-O-06-M



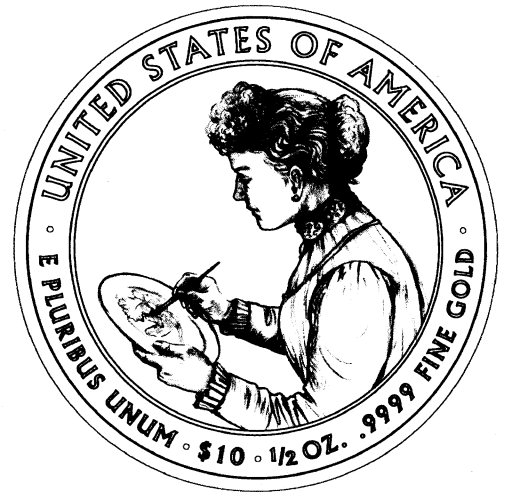
CH-O-07-M



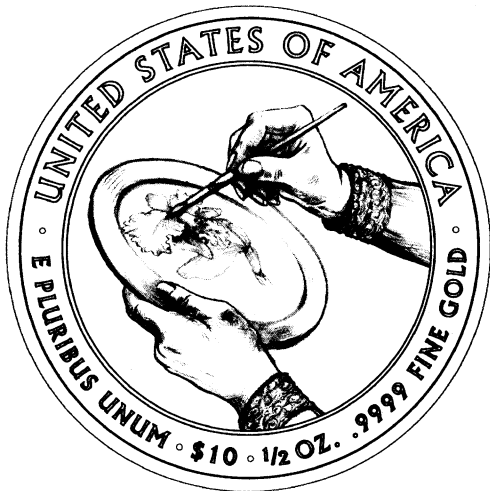
CH-R-01



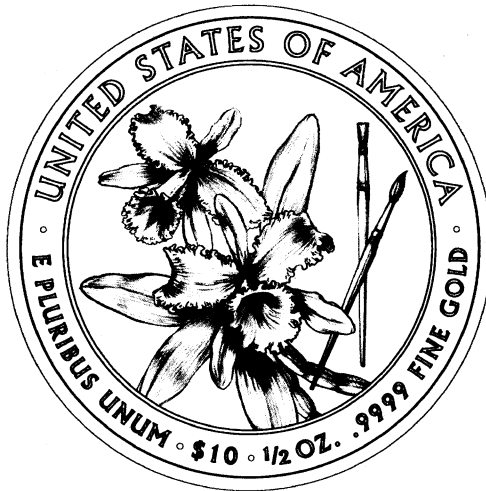
CH-R-02



CH-R-03



CH-R-04



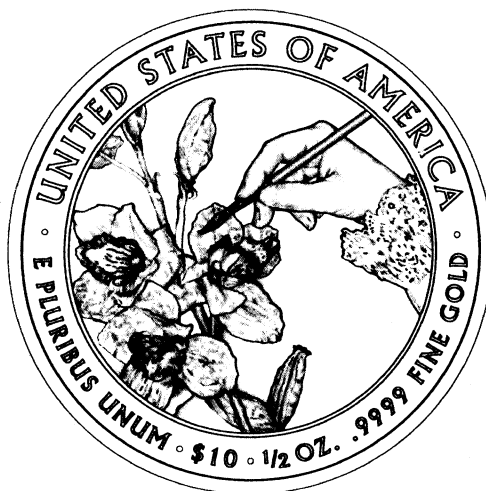
CH-R-05



CH-R-06



CH-R-07



CH-R-08



CH-R-09



**CH-R-01-M**



**CH-R-02-M**



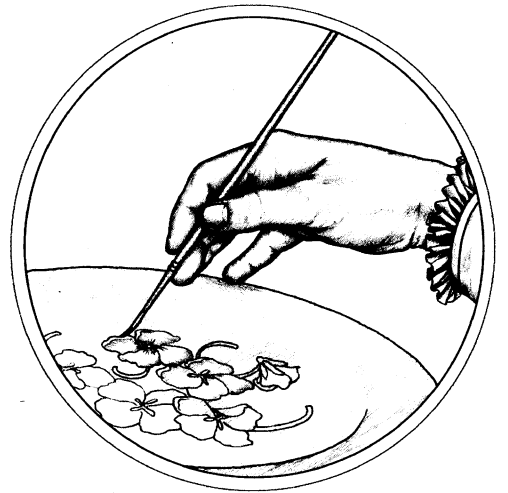
**CH-R-03-M**



**CH-R-04-M**



**CH-R-05-M**



**CH-R-06-M**



**CH-R-07-M**



**CH-R-08-M**



**CH-R-09-M**



## 2012 First Spouse Gold Coin and Medal Narratives

**Obverse: Alice Paul; Reverse: the suffrage movement**

- (1) **The Women's Suffrage Movement and the 19<sup>th</sup> Amendment:** Beginning in the earliest days of the Nation, women have sought the right to vote. By 1917, advocates of women's suffrage were picketing the White House. In January 1918, President Wilson embraced women's suffrage as a "war measure," urging Congress to pass legislation authorizing an amendment granting it. The August 26, 1920, ratification of the amendment gave almost one-half of the entire Nation -- women -- the right to vote. But the simple ability to cast ballots was not all that women gained through passage of the amendment.

### Frances Cleveland

- (1) **Saturday receptions and the working class (first term):** Mrs. Cleveland held receptions at the White House especially for working-class women who were unable to visit on week days. Common "shop girls," government clerks, maids and other service industry workers lined up in the regal East Room or, weather permitting, on the south lawn to shake the hand and have a personal word with the young and popular first lady. After she attended a ceremony marking the opening of an organization dedicated to educational, social and other opportunities for factory workers, Mrs. Cleveland personally greeted women workers. The cover of the November 1887 *Harper's Weekly* magazine featured the event on its cover.
- (2) **Popularity with the public (first and second terms):** Despite President Cleveland's best efforts, "Frankie" (as she was called in the popular press, a nickname she disliked) was an instant celebrity. She was so mobbed by admirers at public events that the President feared for her safety. The new first lady joined the President in an unprecedented tour of the south and west in 1887, and it only increased her fame and popularity. Some examples of the public's intense fascination with her include:
- During a visit to St. Louis, souvenir tokens were struck to commemorate her visit. (National First Ladies Library and Museum Web site)
  - The weekly illustrated newspapers, *Harper's Weekly* and *Leslie's*, made her a frequent cover girl, using her as a drawn illustration in ordinary settings. (National First Ladies Library and Museum Web site)
  - Her image appeared on campaign buttons, posters, flags and other items. (National First Ladies Library and Museum Web site)
  - Young women copied her unique hairstyle (which called for all long strands at the neckline to be cut round) and the poses she took in her formal photographs were released to the press. (National First Ladies Library and Museum Web site)

Her popularity remained strong through both of Cleveland's terms in office. She was the first presidential spouse to have a social secretary to handle her

mail, a position that was held by a man from the existing White House staff during the second term.

- 3) **Educating Women (second term)**: Frances Cleveland was always a strong proponent of education for women at all levels. During President Cleveland's second term, she secured a kindergarten teacher to teach in the White House, the first formalized school to be located there. Several children, including her daughter Ruth, were in the class. Mrs. Cleveland also held a White House First Congress of Mothers reception in February 1897. That congress eventually evolved into the National Parent Teacher Association.

### **Caroline Scott Harrison**

- 1) **China Painting (general)**: Caroline Harrison enjoyed painting for recreation, including china painting, which became one of her passions when she taught ceramic painting at her church. Along with her German teacher Paul Putzki, she taught china painting classes. The classes were made up of Washington wives and daughters. She painted a white "White House Orchid" with water colors and dedicated it to "mothers, wives, and daughters of America." She decorated White House candlesticks, milk sets, platters and other pieces, as well as those owned by women in Washington wanting a White House memento. Her signature was a tiny four-leaf clover.
- 2) **White House China (1889-1893)**: As first lady, Caroline Harrison began the effort to organize pieces of past Presidential china still in the White House into a systematic collection for later display. She uncovered, identified and tagged china, grouping pieces together for eventual public display. She had a china cabinet made to display all past Presidential china she found.